



# aws INNOVATE

DATA EDITION

23 August, 2022

# Achieve real-time insights at edge and cloud with AWS IoT SiteWise

Sakthi Srinivasan

Prototyping Manager  
AISPL

Santhosh Urukonda

Senior Prototyping Architect  
AISPL



# Agenda

- Industrial digital transformation
- Customer challenges
- Common machine data use case
- AWS IoT SiteWise
- Reference architecture + demo
- Resources

# Data drives industrial transformation



# Customer challenges



---

Lack of visibility  
into operations

---

Manual operations,  
batch reporting  
Poor quality and  
Reactive approach



---

Data Management &  
Lifecycle Challenges

---

Combining data from  
all production line.  
Interoperability;  
Sensitive data;



---

Data Analytics

---

Real time Model for  
anomaly detection,  
Predictive maintenance,  
Process optimization



---

Data Protection &  
Security

---

Connecting data from  
different source system  
(Machine. PLCs, MES,  
SCADA) across multi  
plant scenarios.

# Common machine data use cases



## Operational Efficiency

- Near real-time Visibility
- Improve OEE/KPIs
- Root Cause Analysis
- Compare Line/Plant performance
- Digital twin modeling



## Predictive Maintenance

- Condition Monitoring of Assets
- Failure Prediction/Prevention
- Reduce unplanned downtime (MTBF)
- Prescriptive maintenance
- Extend life of assets



## Quality Management

- Anomaly detection/alerts
- Defect capture in-process or at end of the line
- Automated quality inspections
- Reduce scrap/warranty claims



## Energy Optimization

- Electricity usage optimization
- Water consumption improvement
- Process optimization
- Sustainability goals

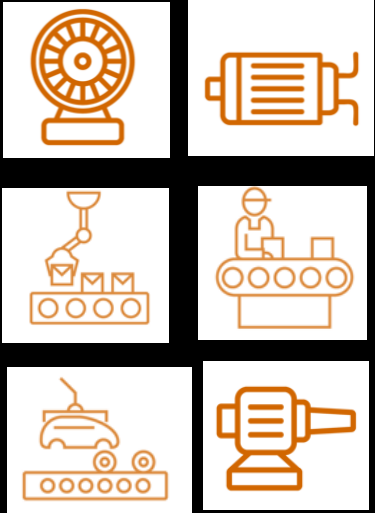
OEE = Overall Equipment Efficiency

MTBF = Mean Time Between Failure

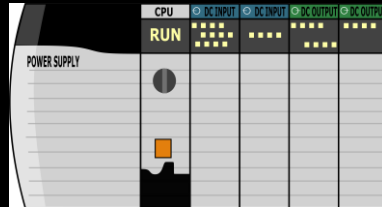


# Machine sensor data & PLC's

## Factory Devices



## PLC's, Controllers



OPC  
UA



## Real Time Data Analytics

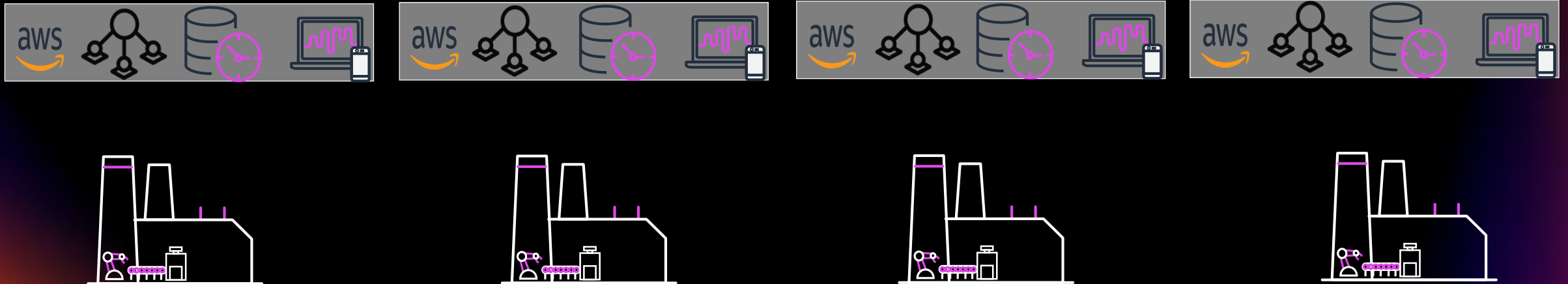


# Factory - Enterprise level strategy

## Enterprise level visibility



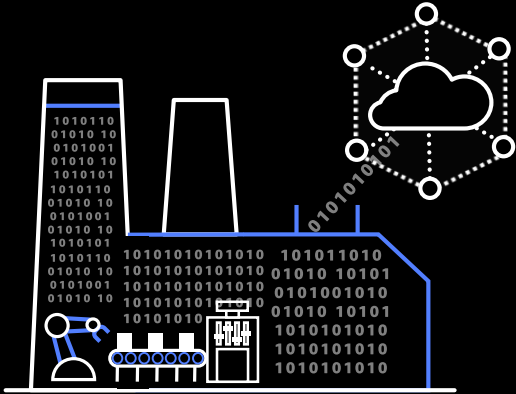
## Division and Plant level visibility



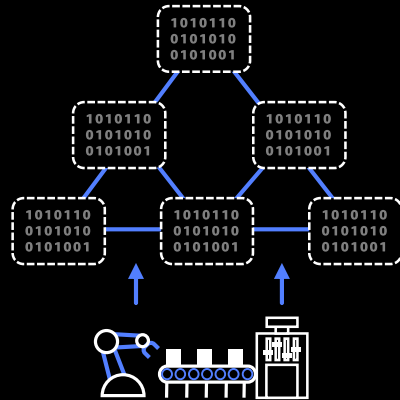


# AWS IoT SiteWise

AWS IoT SiteWise collects data from the plant floor with a local gateway, structures and labels that data, and generates real-time KPIs and metrics to make better data-driven decisions



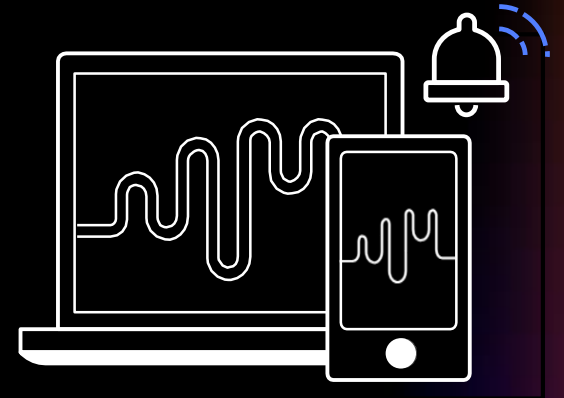
Ingest equipment data into AWS in minutes and process data locally



Structure data with asset models to represent industrial operations



Store data and compute performance metrics for your equipment and processes with asset models



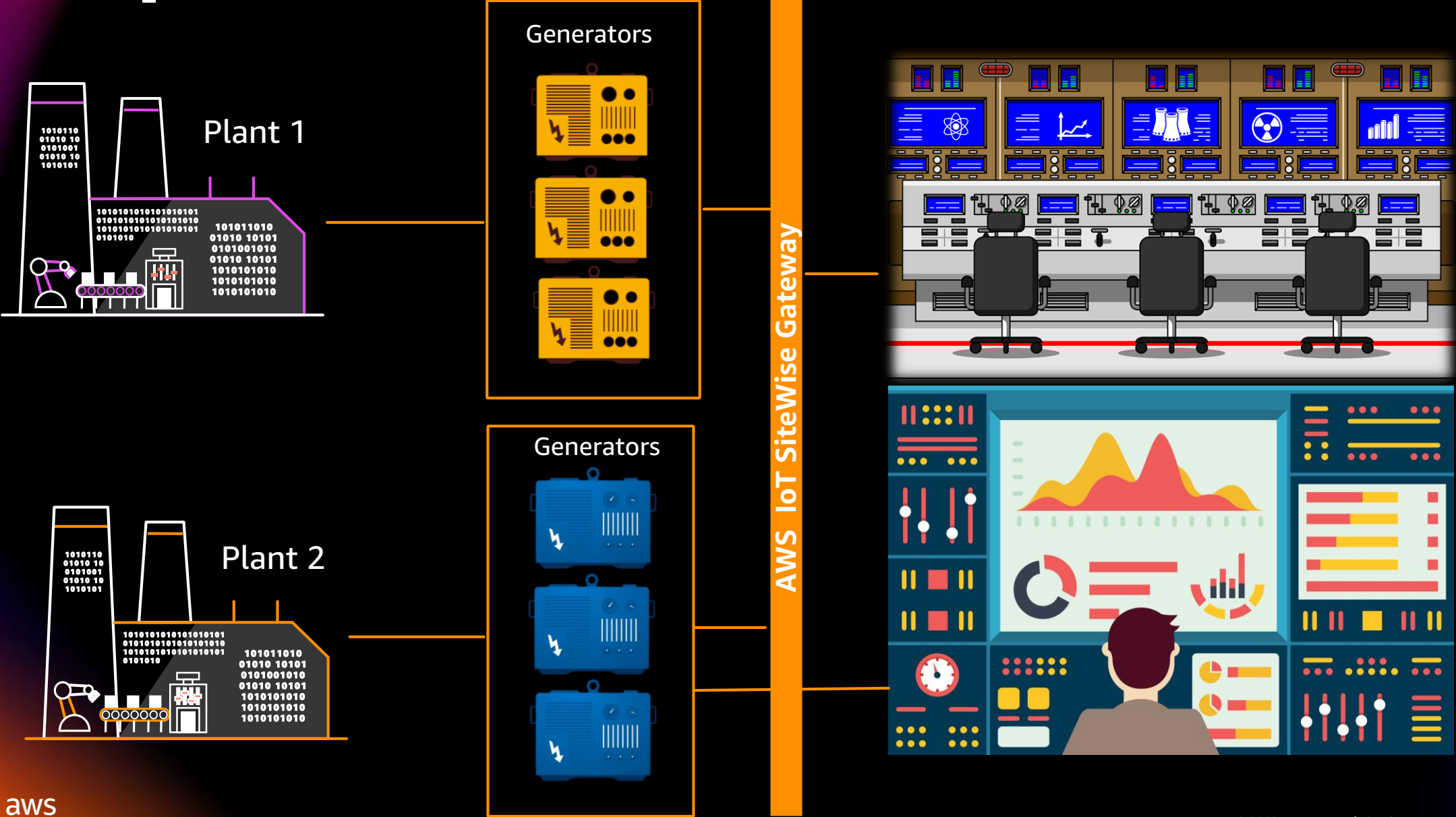
Create and share dashboards to visualize live and historical equipment data; set up alarms to alert operations teams

# AWS IoT SiteWise Edge

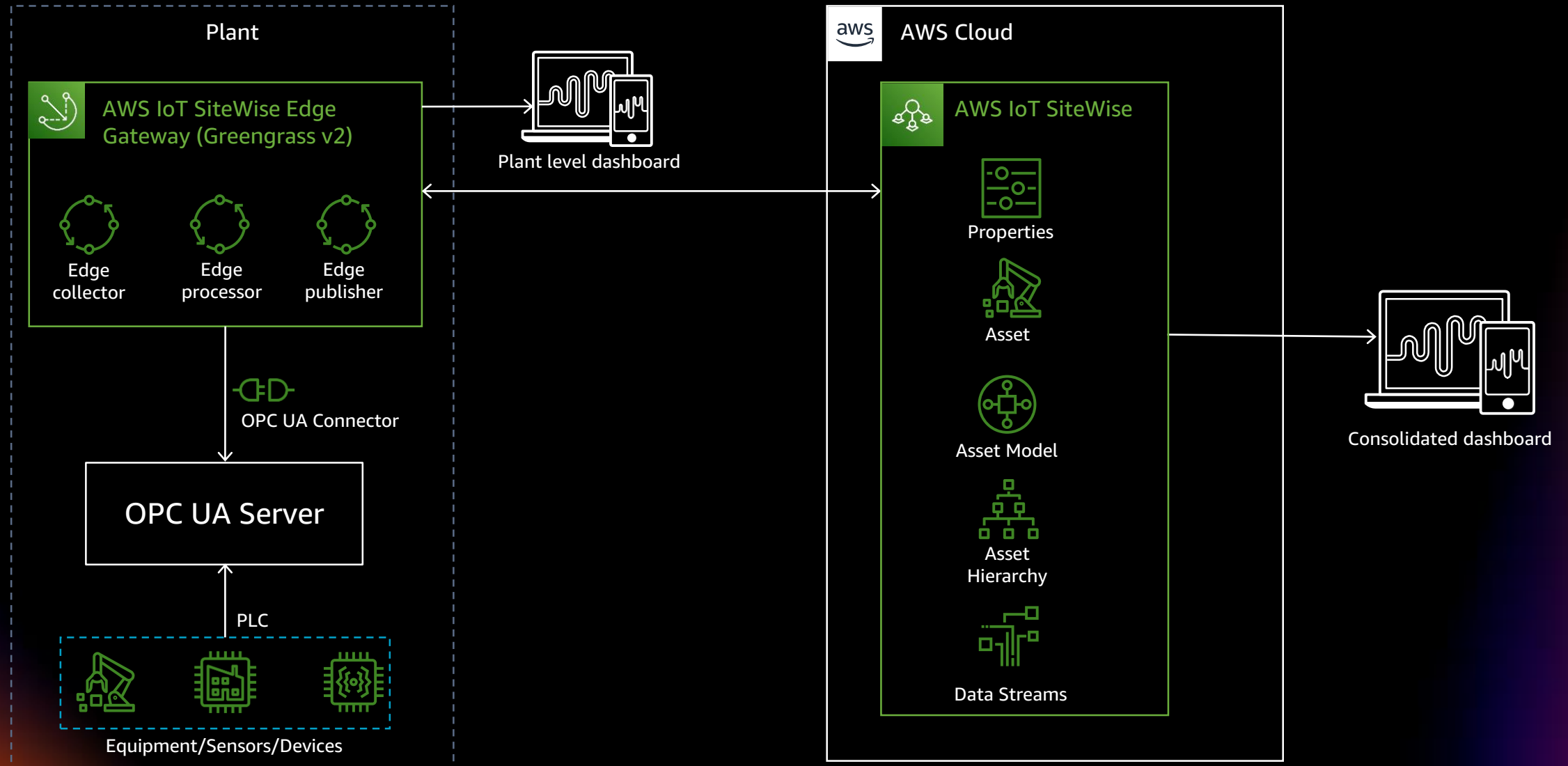


- Run on local hardware
- Local processing before sending to AWS
- Industrial protocol support
- Can work with intermittent connectivity
- Local application integration
- Local analytics & dashboards

# Sample use case



# Reference architecture



# Demo



# Recap

- Accelerate industrial digital transformation
- Customer challenges & machine data
- AWS IoT SiteWise
- Use cases & reference architecture
- Demo



# Resources

- AWS IoT SiteWise user guide  
[go.aws/3EFmM82](https://go.aws/3EFmM82)
- AWS IoT SiteWise demo  
[go.aws/3GR4yCl](https://go.aws/3GR4yCl)
- AWS IoT SiteWise workshop  
[iot-sitewise.workshop.aws/en/](https://iot-sitewise.workshop.aws/en/)
- Node OPC UA  
[node-opcua](https://node-opcua.com)

# Visit the AWS Data resource hub

A modern data strategy can help you manage, act on, and react to your data so you can make better decisions, respond faster, and uncover new opportunities. Dive deeper with these resources today.

- Harness data to reinvent your organization
- In unpredictable times, a data strategy is key
- Make data a strategic asset
- Rewiring your culture to be data-driven
- Put your data to work with a modern analytics approach
- ... and more!



<https://tinyurl.com/data-hub-aws>

[Visit resource hub](#)

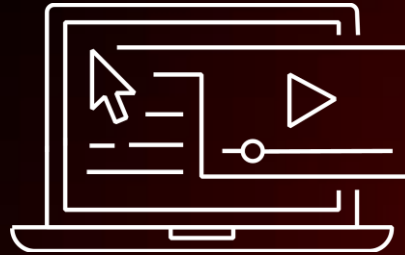
# AWS Training and Certification for Data and Analytics



## **AWS Data & Analytics FREE Training Resources**

Discover how to harness data, one of the world's most valuable resources, and innovate at scale.

<https://bit.ly/3Ntlhy7>



## **AWS Data Analytics Learning Plan**

This learning plan expose you to the fastest way to get answers from all your data to all your users. It can also help prepare you for the AWS Certified Data Analytics - Specialty certification exam.

<https://bit.ly/3wBVjD1>



## **AWS Certified Data Analytics - Specialty**

Earning AWS Certified Data Analytics – Specialty validates expertise in using AWS data lakes and analytics services.

<https://go.aws/3lwF0RR>

# Thank you for attending AWS Innovate – Data Edition

We hope you found it interesting! A kind reminder to **complete the survey**.  
Let us know what you thought of today's event and how we can improve the event experience for you in the future.



[aws-apj-marketing@amazon.com](mailto:aws-apj-marketing@amazon.com)



[twitter.com/AWSCloud](https://twitter.com/AWSCloud)



[facebook.com/AmazonWebServices](https://facebook.com/AmazonWebServices)



[youtube.com/user/AmazonWebServices](https://youtube.com/user/AmazonWebServices)



[slideshare.net/AmazonWebServices](https://slideshare.net/AmazonWebServices)



[twitch.tv/aws](https://twitch.tv/aws)

# Thank you!